

# OXFORD

## LEADERSHIP ACADEMY

### SELF MANAGING LEADERSHIP

One of the world's most powerful leadership development programmes delivered in English.

## 2.5 DAY PROGRAMME DELIVERED BY GRAHAM BIRD AND LENA LINDBLOM *February 2nd - 4th 2012, London, UK*

### Graham Bird



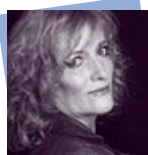
*Graham Bird is a Fellow, course leader and facilitator with the Oxford Leadership Academy. He has more than 20 years experience as a training and development consultant and qualified executive coach, specialising in leadership development and culture change. He is a regular facilitator of programmes all over Europe. His most recent activities include major cultural change initiatives for BASF, Akzo Nobel and Telefónica o2.*

>> Turbulent times call for extraordinary leadership

*Effective leaders know that times of crisis can be opportunities to steer themselves, their organisations and their teams in clear and constructive new directions. A lack of personal and strategic focus makes this process more challenging.*

*The SML™ programme provides leaders with the tools they need to manage themselves first, as a springboard to aligning and guiding their people.*

### Lena Lindblom



*Lena Lindblom is a Fellow with the Oxford Leadership Academy.*

*She has been a consultant with MacMannBerg and held a number of positions within the health sector. She is a licensed psychologist and trained actress. She has worked with among others IKEA, TeliaSonera, HP, The Swedish Government, Ericsson, DanskeBank and AlfaLaval. She is part of our global team developing leaders in for example Telefónica and BASF.*

>> How the SML will benefit you and your organisation

*Through careful introspection and guided facilitation, you will:*

- > identify your negative and positive patterns/habits and behaviours that are present in your life.
- > identify and focus on the values which are personal to you and which you stand by.
- > identify your purpose or that which gives meaning to your life.
- > create a future vision for your life in three key areas: your role as a leader, your role in your family/community life and your personal life.
- > recognise and put in place a plan to overcome barriers which are holding you back from becoming all that you can be.
- > emerge with concrete strategies for better managing yourself, your relationships, your career and your organisation.
- > leave with a framework for self management and personal accountability and with a plan for embedding your learning in practice after the course.

# OXFORD LEADERSHIP ACADEMY

## SELF MANAGING LEADERSHIP



The Planning Model shown above is the core of the SML programme. It represents the steps that participants are taken through in their journey of leadership self-discovery.

### Testimonials

O2 IRELAND

#### Damien Devonay Marketing Director

This course has given me the opportunity to change my life for the better. It was very well managed and facilitated.

TELEFÓNICA

#### T.B. Silva VP Human Resources

It is a great opportunity to know and work on our own strengths and weaknesses in order to develop a plan. I truly believe that deep change occurs only by example, and we as executives must lead with examples and actions rather than words.

LEGAL OPPORTUNITIES UK

#### John Lingard Managing Director

A rare chance to think about me, my place at work and my place in the family.

VERB GROUP LTD UK

#### John Dunn Marketing Director

I was astonished, first at the content and flow of the course, and second at the personal value to me.

CSC, WASHINGTON

#### Head of Global Strategy

SML™ is an incredibly effective way of getting people to understand and articulate their vision for the future and linking that to the mission of the organization. Doing this across the company results in an extraordinary competitive edge.

TELEFÓNICA PERU

#### Senior Vice President

In my previous professional life, I worked for IBM for 25 years in diverse executive positions. I had the opportunity to attend many courses in leadership during this period. It is with a lot of gratitude that I tell you that the SML™ leadership program guided by the Oxford Leadership Academy team, has been spectacular and, without any doubt, is the best leadership course that I can remember.

O2 GERMANY

#### Rene Schuster CEO

I don't know how you can be an effective leader within Telefónica if you did not go through this programme or buy into its philosophy.

WARNER BROS

#### John Mahtani Vice President

Oxford Leadership Academy's SML programme was by far the most powerful and moving course I have ever attended in my entire professional career. The vision and foresight gained has helped me deal with many difficult situations both personally and professionally.

AKZO NOBEL

#### Heiko Hutmacher Global HR Director

Top leaders will benefit from making a leadership journey that touches their hearts and minds. SML is an inspirational experience that allows personal leadership to be the starting point and anchor for better team and organisational leadership.

### PROGRAMME DETAILS:

This SML programme is structured as a two and a half day residential retreat, delivered in an inspiring environment close to nature. It includes dozens of real-life examples of personal and professional transformation as well as interactive workshops and moments of deep personal reflective enquiry.

Dates: February 2nd – 4th (Start at 18:00 first day, ends at 17:00 last day)

Location: London, UK

Price: £1599 (ex. VAT)

Course fees include all course materials, lunch and refreshments throughout.

Accommodation is available at an additional cost at the venue, details will be emailed to you on registration.

Register before December 23rd 2011

More information and registration:

Graham Bird: +447973509361

E: [graham.bird@oxfordleadership.com](mailto:graham.bird@oxfordleadership.com)

[www.oxfordleadership.com](http://www.oxfordleadership.com)

[oxfordleadership.com](http://oxfordleadership.com)

Offices in UK: Germany: Austria: Denmark: Sweden: Spain: USA: Mexico: Brazil: Uruguay and Hong Kong. Academy Fellows in 28 countries